



SOIL MECHANICS

Soil Mechanics can deliver a cost-effective solution for your over water drilling projects.

Soil Mechanics' customised drilling rig and High Achiever work boat supplied by Westcoast Workboats, can operate in very shallow water or sit on mud and sand. Ideal in tidal zones, mud flats, canals, rivers and nearshore areas. With internal cooling, this vessel does not require under keel water to be operational.

The High Achiever is a self-propelled barge also fitted with bow thrusters and 4-point anchoring system, making the barge very maneuverable and easily fastened in tight areas. This vessel can be transported by road or sea depending on project location. With an onboard crane capable of lifting 6Ton this vessel can self load all drilling equipment including the drilling rig.

The vessel has high non-slip aggregate paint that provides a safe working area for drilling and logging activities including full handrails on perimeter of vessel.

DR001 Drilling Rig

Light weight customised drilling rig with 2 speed head, wire & haul line, foot clamps.
Refurbished January 2020

SAFETY

- Emergency stops
- Fire Extinguishers
- Safety rod cage
- Spill containment
- First aid kit

WATER PUMP

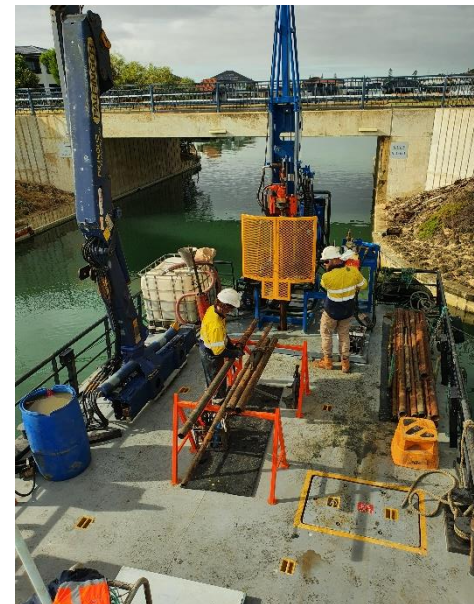
CAT Triplex water pump

High Achiever Drilling Barge



DRILLING CAPABILITIES

- Geotechnical Drilling
- Environmental Sampling
- PQ3/HQ3 coring
- Standard Penetration Testing
- U-50/63 Tube sampling
- Piston Sampling
- Shear Vane Testing



Vessel Specs:

- USL class 2C Operations within 30NM seaward of mainland baseline or recognised island.
- Construction: Steel
- Beam: 5.3m Draft: 1.2m Length: 11.95m
- Deck Winch: 5Ton
- Deck Crane: Palfinger PK15002A
- Wheelhouse: VHF Radio, AIS, Depth Sounder, Navigation Plotter, DGPS, Satellite Phone

www.soilmechanics.com.au
info@soilmechanics.com.au